



Visu Demo Factory

The software package “Visu Demo Factory” includes a sample project with a visualization of a packaging system.

Product description

The sample project shows what a visualization can look like and which visualization elements are available. The implemented packing system consists of several modules with states that can be simulated.

More information

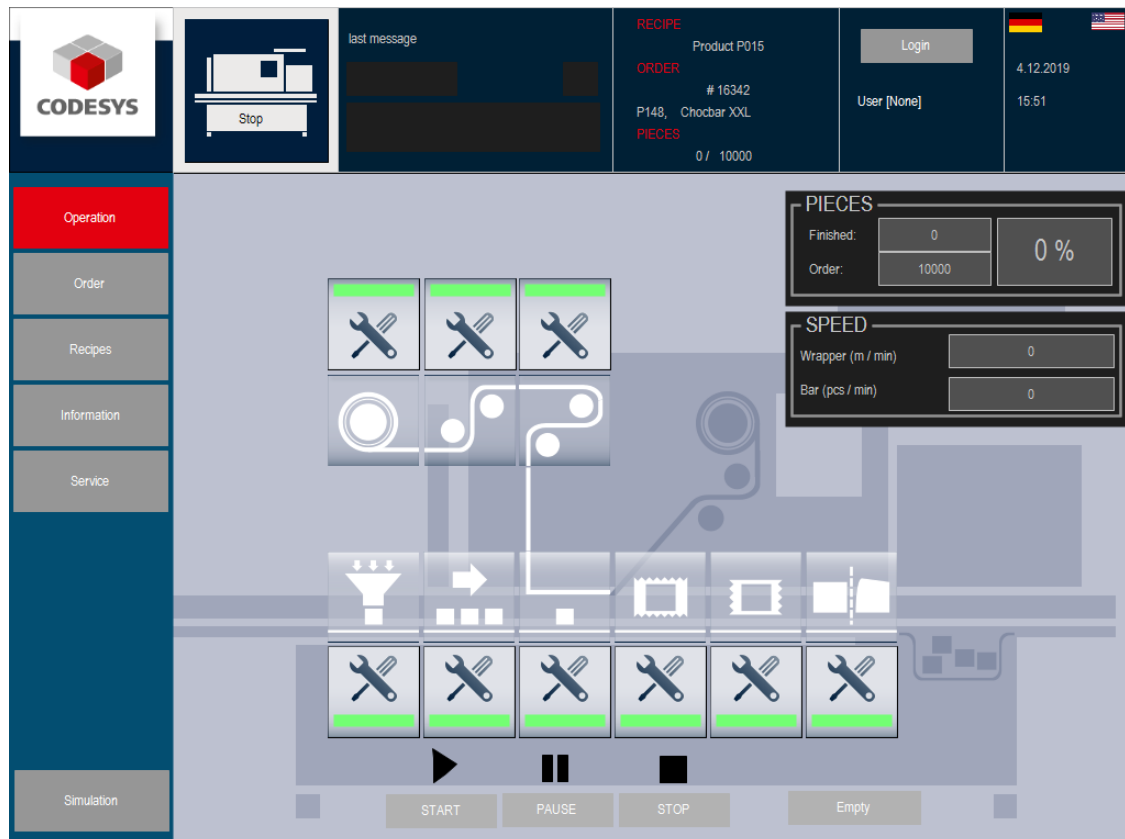
In order to start the simulation of production, a user must be logged in.

- Login user: a
- Login password: a

The production is started by pressing the start button. If an error is displayed, then a dialog is opened by clicking the red module button. Then you can reset the error.

You can use the recipes to change the settings of the machine for a specific product. This can also be changed in the respective modules on the operating side if the tool symbol is displayed.

When the order has been processed, the next order can be selected in the menu “Orders / Open orders”.



Screenshot: Visualization in the sample project “VisuDemoFactory.project”

General information

Manufacturer:

3S-Smart Software Solutions GmbH
 Memminger Strasse 151
 87439 Kempten
 Germany

Support:

<https://support.codesys.com>

Item:

Visu Demo Factory

Item number:

000076

Sales:

CODESYS Store

<https://store.codesys.com>

Included in delivery:

CODESYS package with sample project

System requirements and restrictions

Programming System	CODESYS Development System V3.5.8.0 or higher
Runtime System	CODESYS Control V3.5.8.0
	All
Supported Platforms/ Devices	Note: Use the project "Device Reader" to find out the supported features of your device. "Device Reader" is available for free in the CODESYS Store.
Additional Requirements	-
Restrictions	-
Licensing	-
Required Accessories	-

Note: Not all CODESYS features are available in all territories. For more information on geographic restrictions, please contact sales@codesys.com.

Note: Technical specifications are subject to change. Errors and omissions excepted. The content of the current online version of this document applies.